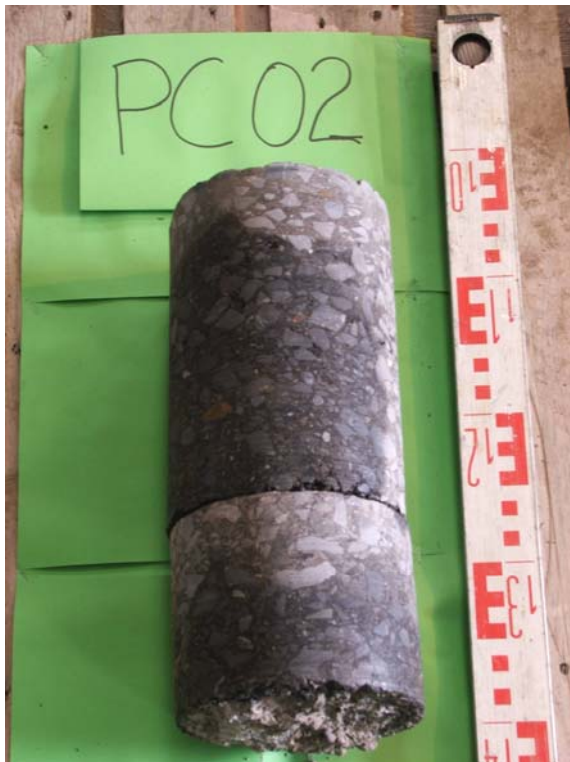


Pavement Core Photographic Record and Log



Priority Geotechnical Limited

Layer No.	Depth		Thickness, mm	Material Description	Binder	Aggregate	
	From	To				Agg'	Type
1	0	55	55	Hot Rolled Asphalt, HRA with 20mm pre-coated chippings Surface Coarse	B	14	CR
2	55	110	55	Dense Bitumen Macadam, DBM Binder Coarse	B	20	CR
3	110	215	105	Dense Bitumen Macadam, DBM Base Coarse	B	20	CR
4	215	325	110	Dense Bitumen Macadam, DBM Base Coarse, de-bonded	B	28	CR



Nominal diameter:

Binder:

B = Bitumen

T = Tar

C = Cement

N = None

Aggregate:

40 = 40mm max' aggregate size

28 = 28mm

20 = 20mm

14 = 10mm to 14mm

6 = 3m to 6mm

Aggregate Type (Type):

CR = Crushed Rock

G = Gravel

S = Slag

O = Other

Pavement Core Number:

**Project
Project No
Carried
Out**